

Determination of Common Anions and Organic Acids Using Ion Chromatography-Mass Spectrometry

Leo (Jinyuan) Wang and William C. Schnute
 Mass Spectrometry Technical Center
 Dionex Corporation, Sunnyvale, CA, USA

INTRODUCTION

Mass spectrometry (MS) as a detector for ion chromatography (IC) has gained popularity recently due to the increasing demand for sensitivity, selectivity, confirmation of identity, and structural interpretation.¹⁻⁸ Compared to other commercially available MS detectors, the MSQ Plus™ detector offers substantially improved performance for low-molecular-weight analytes, which covers most analytes for small-molecule IC applications.

This poster demonstrates the IC-MS method using the MSQ Plus detector for the determination of five common anions and selected organic acids. Method performance with respect to calibration range, reproducibility, and method detection limits are also presented.

Now sold under the
 Thermo Scientific brand



EXPERIMENTAL

Instrumentation

System:	Dionex ICS-2000 RFIC™ system
Columns:	IonPac® AS20 (2.1 × 250 mm) with IonPac AG20 (2.1 × 50 mm) guard and CR-ATC Continuously Regenerated Anion-Trap Column
Mobile Phase:	28 mM hydroxide generated from EGC II KOH cartridge
Flow Rate:	0.25 mL/min
Injection Volume:	5 µL
Detection:	Suppressed conductivity (external water at 0.50 mL/min) MSQ Plus single quadrupole mass spectrometer
Ionization Interface:	Electrospray ionization (ESI)
Desolvation Solvent:	0.22 mL/min acetonitrile delivered by an AXP-MS auxiliary pump
MS Detection Mode:	Negative Selected Ion Monitoring (SIM). Scan details shown in Table 1.
Needle Voltage:	1.5 kV
Nebulizer Gas:	Nitrogen at 85 psi
Probe Temperature:	450 °C

Table 1. MS SIM Scans*

Analyte	Adduct	Observed (m/z)	Cone Voltage (V)
Fluoride	[F(HF)] ⁻	39.1	88
Chloride	[Cl] ⁻	35.1	26
Nitrate	[NO ₃] ⁻	62.1	73
Sulfate	[HSO ₄] ⁻	97.1	45
Phosphate	[H ₂ PO ₄] ⁻	97.1	69
Pyruvate	[CH ₃ COCOO] ⁻	87.1	52
α-Ketoglutarate	[HOCCO(CH ₂) ₂ COO] ⁻	145.2	50
Tartrate	[HOOC(CH ₂ OH) ₂ COO] ⁻	149.2	37

* Use 0.5 span and 0.1 s dwell time for all SIM scans.

Software

Instrument control, data acquisition, processing, and report generation were accomplished through the Chromeleon® Chromatography Data System (version 6.8 SR6).

Reagents and Standards

All stock standard solutions for individual analytes were prepared in deionized water (D.I. water, 18.2 MΩ-cm⁻¹, Millipore). Fluoride and nitrate standards were prepared by diluting standard solutions obtained from Ultra Scientific (P/N ICC-003) and Dionex (P/N 060254) respectively. Chloride, sulfate, and phosphate standards were prepared by dissolving potassium salts in D.I. water (pure chemicals obtained from Mallinckrodt and Fisher). Standard solutions of organic acids were prepared by dissolving each chemical (in organic or salt form) in D.I. water: pyruvic acid, sodium salt (Sigma, P2256), α-ketoglutaric acid, monopotassium salt (Sigma, K2000), and tartaric acid (Aldrich, T400). Methanol (CH₃OH) and acetonitrile (CH₃CN) were purchased from Burdick & Jackson (HPLC/UV grade, Honeywell, Muskegon, MI).

The mixed standard solution, including each of the listed analytes at 5.0 ppm, was prepared by diluting each of the stock standard solutions in D.I. water. Calibration standards were prepared by series dilution to 1000 ppb, 500 ppb, 200 ppb, 100 ppb, 50 ppb, 20 ppb, 10 ppb, 5 ppb, and 2 ppb.

RESULTS AND DISCUSSION

The optimization of the acquisition parameters of the MSQ Plus spectrometer for IC analysis of common anions and selected organic acids is discussed in detail elsewhere.⁹ MSQ parameters, including probe temperature, nebulizer gas flow, assistant makeup flow rate, needle voltage, and cone voltage were optimized using Response Surface Methodology (RSM) with Central Composite Design (CCD). Compared to the one-parameter-at-a-time approach for optimization, RSM with CCD includes the effects from interactions between parameters (ignored by a single parameter approach) and also minimizes the numbers of experiments required to reach the optimum system performance. The optimum conditions determined for the MSQ Plus spectrometer in these experiments are listed in the instrumentation section and the analyte individualized cone voltages for SIM scans are listed in Table 1.

It is important to note that the SIM ion selected for fluoride is 39.1 *m/z*, which is associated with the fluoride adduct [F(HF)]⁻. Representative conductivity and SIM chromatograms are shown in Figure 1 (1 ppm with 5 μL). Compared to nonspeciating conductivity detection, each analyte can be quantified very specifically using MS SIM detection, shown as one peak in SIM channel for each target analyte. The deprotonated sulfate [HSO₄]⁻ and phosphate [H₂PO₄]⁻ ions which have the same mass-to-charge ratio (*m/z*) at 97 are shown as two peaks in SIM channel 97, and can also be accurately quantified because they are chromatographically separated. The differentiation of sulfate from phosphate can be confirmed by the presence of a 99 *m/z* isotopic peak ([H³⁴SO₄]⁻) at 5% relative to the intensity of the peak at 97 *m/z* (Figure 2). The peak area of sulfate in the 99 channel is 59838 vs the 1183518 counts × min in the 97 channel. Also seen in this figure, XIC 99 *m/z* channel shows only one peak, demonstrating the specific detection of [H³⁴SO₄]⁻.

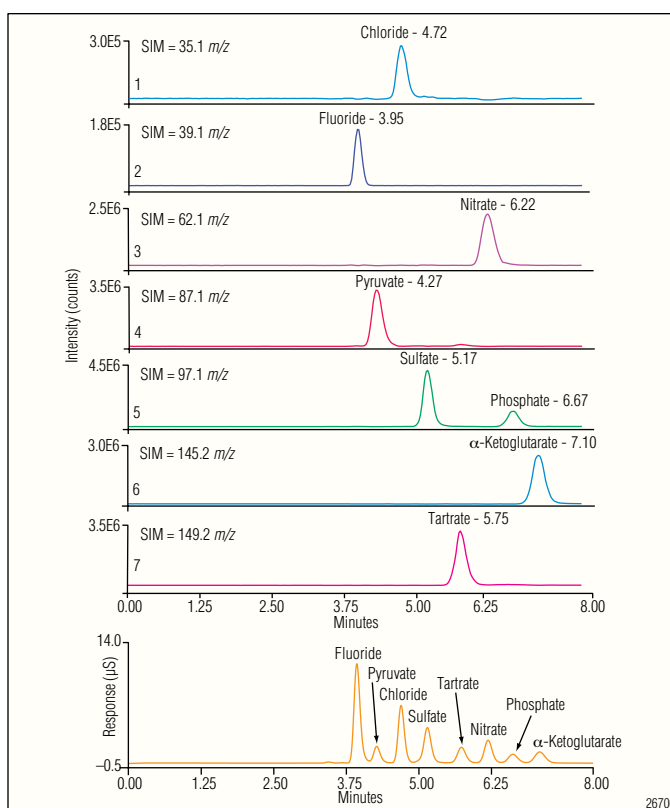


Figure 1. Conductivity and SIM chromatograms of five common anions and three selected organic acids.

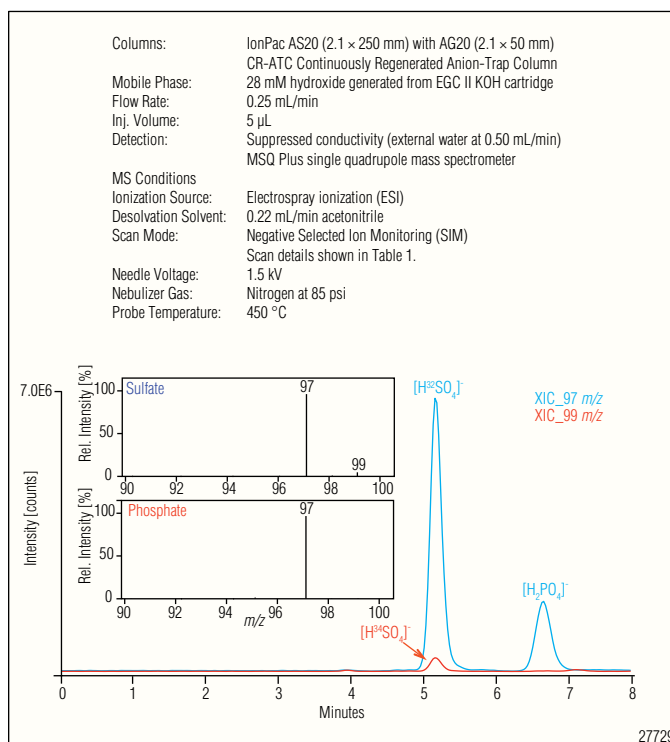


Figure 2. Extracted ion chromatograms of 97 *m/z* and 99 *m/z*.

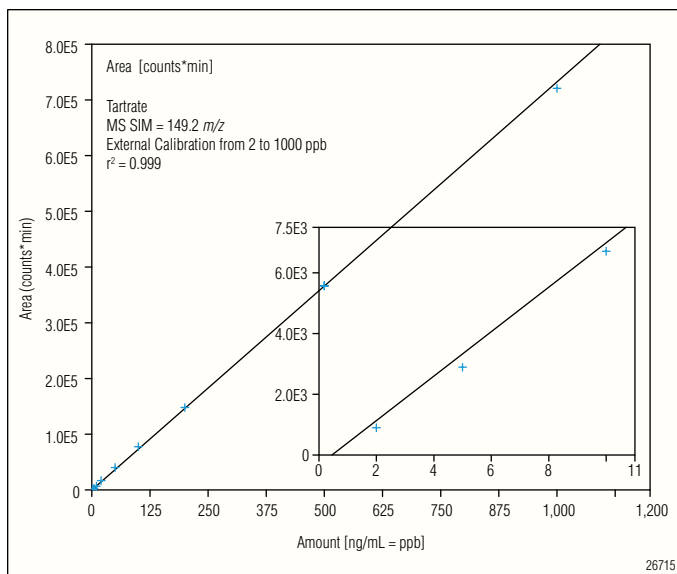


Figure 3. Calibration curve of tartrate at concentrations from 2 ppb to 1000 ppb.

Calibration curves were generated using concentrations from low ppb to 1.0 ppm, and method detection limits (MDL) were calculated by:

$$MDL = S \times t_{99\%, n=7}$$

where S is the standard deviation and t is the Student's t at 99% confidence interval. Seven replicate injections of a calibration standard at 20 ppb were performed to calculate the MDL (100 ppb was used to calculate MDL for fluoride). Calibration range, coefficient of determination, and MDL values are summarized in Table 2. Figure 3 shows the calibration curve for tartrate from 2 ppb to 1000 ppb and the graphic insert shows the linear curve at the lower levels.

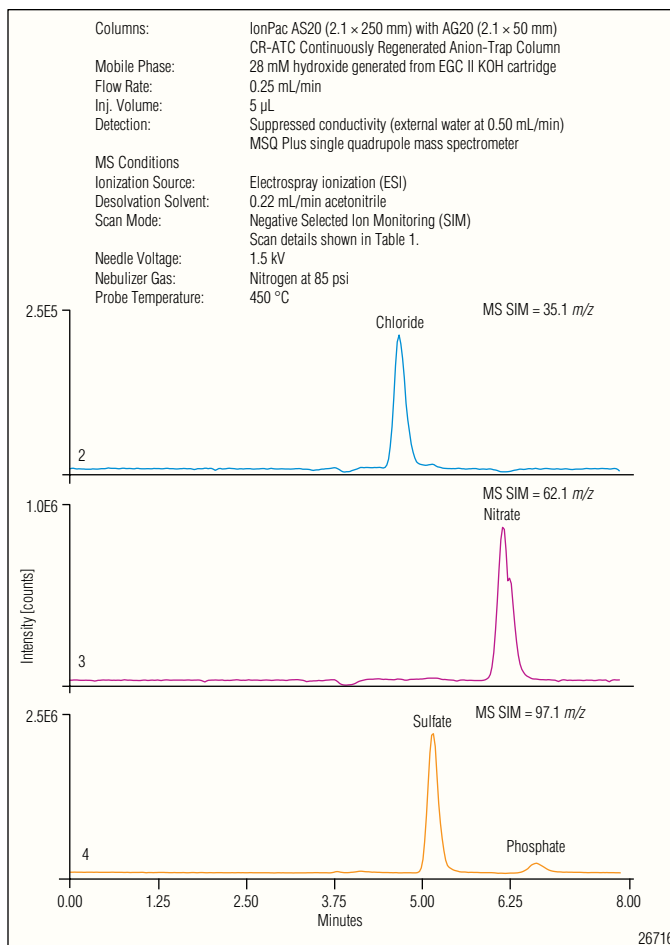


Figure 4. Anions in a bottled water sample.

Table 2. Calibration Range, Coefficient of Determination, and MDLs

Analyte	Calibration Range (ppb)		Calibration Type	Weighting	r^2	%RSD*	MDL (ppb)
Fluoride	100	1000	Linear	1/X	0.997	9.35	29.4
Chloride	2	1000	Cubic	1/X	0.980	5.16	3.2
Nitrate	2	1000	Cubic	1/X	0.992	4.05	2.5
Sulfate	2	1000	Linear	1/X	0.998	5.75	3.6
Phosphate	5	1000	Linear	1/X	1.000	7.78	4.9
Pyruvate	2	1000	Quadratic	1/X	0.999	5.06	3.2
α -Ketoglutarate	5	1000	Linear	1/X	0.998	4.98	3.1
Tartrate	2	1000	Linear	1/X	0.999	5.20	3.3

* %RSD was calculated from 7 replicate injections of a calibration standard at 20 ppb except for fluoride (100 ppb).

After calibration, this method was used for quantification of the target analytes in commercially bottled drinkingwater. A 5 μ L aliquot from a bottled water sample was injected directly without sample preparation. Figure 4 shows the overlay of SIM chromatograms. Four anions were detected in the bottled water sample: 713 ppb chloride, 496 ppb sulfate, 143 ppb nitrate, and 181 ppb phosphate.

CONCLUSION

This poster demonstrates the use of the IC-MS method for the determination of five common anions and three organic acids at parts per billion levels. With the use of very specific MS SIM detection, ppb level quantification can be performed with greater confidence on real world samples, such as bottled drinking water. The quantification results from MS were without prior sample preparation or employing preconcentration, which may be required with other detection methods.

Note that the optimum settings and responses may vary on different instruments; optimization of MSQ Plus source conditions and acquisition parameters is highly recommended for best results.

REFERENCES

1. Geng, X.; Zhang, S.; Wang, Q.; Zhao, Z. K. *J. Chromatogr., A* **2008**, *1192*, 187–190.
2. De Borja, B. M.; Rohrer, J. S. *J. Chromatogr., A* **2007**, *1155*, 22–30.
3. Lyubarskaya, Y.; Houde, D.; Woodard, J.; Murphy, D.; Mhatre, R. *Anal. Biochem.* **2006**, *348*, 24–39.
4. Thayer, J. R.; Rao, S.; Puri, N.; Burnett, C. A.; Young, M. *Anal. Biochem.* **2007**, *361*, 132–139.
5. Li, B.; Chen, F.; Wang, X.; Ji, B.; Wu, Y. *Food Chem.* **2007**, *102*, 1135–1143.
6. Roehl, R.; Slingby, R.; Avdolic, N.; Jackson, P.E. *J. Chromatogr., A* **2002**, *956*, 245–254.
7. El Aribi, H.; Le Blanc Y.J.C.; Antonsen, S.; Sakuma, T. *Anal. Acta.* **2006**, *567*, 39–47.
8. Jackson, L.K.; Joyce, R.J.; Laikhtman, M.; Jackson, P.E. *J. Chromatogr., A* **1998**, *829*, 187–192.
9. Wang, L.J.; Schnute, W.C. Optimizing Mass Spectrometric Detection for Ion Chromatographic Analysis: I. Common Anions and Selected Organic Acids. *Rapid Commun. Mass Spectrom.* **2009**, *23*, 3439–3447.

MSQ Plus is a trademark of Thermo Fisher Scientific, Inc.
IonPac and Chromeleon are registered trademarks and
RFIC is a trademark of Dionex Corporation.

Passion. Power. Productivity.



Dionex Corporation

1228 Titan Way
P.O. Box 3603
Sunnyvale, CA
94088-3603
(408) 737-0700

North America

U.S. / Canada (847) 295-7500

South America

Brazil (55) 11 3731 5140

Europe

Austria (43) 1 616 51 25 Benelux (31) 20 683 9768; (32) 3 353 4294
Denmark (45) 36 36 90 90 France (33) 1 39 30 01 10 Germany (49) 6126 991 0
Ireland (353) 1 644 0064 Italy (39) 02 51 62 1267 Sweden (46) 8 473 3380
Switzerland (41) 62 205 9966 United Kingdom (44) 1276 691722

Asia Pacific

Australia (61) 2 9420 5233 China (852) 2428 3282 India (91) 22 2764 2735
Japan (81) 6 6885 1213 Korea (82) 2 2653 2580 Singapore (65) 6289 1190
Taiwan (886) 2 8751 6655

www.dionex.com



LPN 2634-01 8/10
©2010 Dionex Corporation