

Direct Determination of Metal Cyanides by Ion Chromatography with UV Absorbance Detection

INTRODUCTION

Metal cyanide complexes are negatively charged ionic complexes consisting of one or more cyanide ions (CN⁻) bound to a single transition metal cation. These complexes have the general formula [M(CN)_b]^{x-}, where M represents a transition metal cation (such as Ag⁺, Au⁺, Cu⁺, Ni²⁺, Fe²⁺, Co³⁺, etc.), b is the number of bound cyanide ions, and x is the total anionic charge of the complex. Metal cyanide complexes are of environmental concern because they release cyanide upon dissociation. In environmental waters below pH 9.3, the cyanide ion converts to HCN, an extremely toxic substance. Metal cyanide complexes are also of interest in the mining and reclamation of precious metals, and in the metal finishing industry.

Many metal cyanide complexes are relatively stable and require moderate to strongly acidic conditions to liberate cyanide. The stability of metal cyanide complexes with respect to dissociation is expressed by their formation constants, and shown in Table 1. As indicated in Table 1, metal cyanide complexes with formation constants greater than about 10³⁵ are often termed “strong metal cyanide complexes”. The distinction between weak and strong complexes is environmentally relevant because strong complexes such as iron (II) cyanide dissociate only under strongly acidic conditions (pH < 2) and are considered relatively stable and nontoxic, whereas weak metal cyanide complexes dissociate under mildly acidic conditions (pH > 3 but < 6) to liberate cyanide.

Previous methods that assess the potential toxicity due to cyanide directly measure only free cyanide, typically by a colorimetric reaction with a pyridine-barbituric acid reagent. These methods then rely on an operational definition to distinguish between weak and strong cyanide complexes, by subjecting the sample to

increasingly harsh conditions to dissociate some fraction of the cyanide complexes and liberate free cyanide. Examples include methods that measure “cyanides amenable to chlorination”,¹ “weak acid dissociable cyanides”,² “available cyanide”,³ and “total cyanide”.⁴ The results are highly dependent on the matrix, the type of metal cyanide complexes present, and the procedure used. These methods also require time-consuming sample pretreatment or distillation to reduce interference from sulfides, chlorine, thiosulfate, and other compounds.

TABLE 1. STABILITY OF METAL CYANIDE COMPLEXES^{8, 9}

Metal Cyanide Complex	Stability Constant (log K at 25 °C)	Type of Complex
[Co(CN) ₆] ³⁻	64	Strong
[Fe(CN) ₆] ³⁻	43.6	Strong
[Pd(CN) ₄] ²⁻	42.4	Strong
[Pt(CN) ₄] ²⁻	40.0	Strong
[Hg(CN) ₄] ²⁻	39.0	Strong
[Au(CN) ₂] ⁻	37	Strong
[Fe(CN) ₆] ⁴⁻	35.4	Strong
[Ni(CN) ₄] ²⁻	30.2	Weak
[Cu(CN) ₄] ³⁻	23.1	Weak
[Cu(CN) ₃] ²⁻	N.A.*	Weak
[Ag(CN) ₂] ⁻	20.5	Weak
[Zn(CN) ₄] ²⁻	19.6	Weak
[Cd(CN) ₄] ²⁻	17.9	Weak

* N.A. Data not available

Ion chromatography (IC) is superior to the aforementioned methods because it resolves each individual metal cyanide complex into a discrete chromatographic peak. IC thus allows a precise differentiation of complexes of lesser toxicity from those of greater toxicity. This application update presents modifications to the IC method described in Dionex Application Note 55.⁵ The metal cyanide complexes of silver, gold, copper, nickel, iron, and cobalt ($[\text{Ag}(\text{CN})_2]^-$, $[\text{Au}(\text{CN})_2]^-$, $[\text{Cu}(\text{CN})_3]^{2-}$, $[\text{Ni}(\text{CN})_4]^{2-}$, $[\text{Fe}(\text{CN})_6]^{4-}$, $[\text{Co}(\text{CN})_6]^{3-}$) are separated on a 2-mm IonPac[®] AS11 column and quantified by measuring their absorbance at 215 nm. Use of the 2-mm AG11/AS11 column set provides different selectivity, lower eluent use, and better solvent compatibility than the AG5/AS5 column set featured in Application Note 55. This application update also presents a thorough comparison of the performance expected from the different column sets, with data obtained during participation in a joint ASTM/EPA interlaboratory collaborative study to validate the use of IC for the determination of metal cyanide complexes in environmental waters. The method was evaluated for reproducibility, linearity, accuracy, precision, and spike recovery from various matrices.⁶

EQUIPMENT

Dionex ICS-2500 IC system consisting of:

GP50 Gradient Pump

AD25 Absorbance Detector

AS50 Autosampler with Thermal Compartment

Chromeleon[®] Chromatography Workstation

Consumables

Syringe filters (Gelman IC Acrodisk[®] 0.2- μm , PN 4483)

Storage bottles, amber HDPE (VWR IRN301-0125 or 16172-144)

CONDITIONS

Columns: IonPac AS11 Analytical
2 × 250 mm (P/N 44076)
IonPac AG11 Guard 2 × 50 mm
(P/N 44078)
IonPac ATC-3 (PN 059660) (2 each)

Temperature: 30 °C

Injection: 25 μL

Detection: Absorbance at 215 nm

Expected System

Backpressure: 900 psi

Noise: 1–5 mAU

Run Time: 35 min

Flow Rate: 0.25 mL/min

Eluent A: 20 mM NaOH/150 mM NaCN

Eluent B: 20 mM NaOH/300 mM NaClO₄

Eluent C: 20 mM NaOH

Pump Program:

Time (min)	%A	%B	%C
Init.	10	10	80
0.0	10	10	80
18.0	10	45	45
22.0	10	45	45
25.0	10	10	80
35.0	10	10	80

REAGENTS AND STANDARDS

Sodium hydroxide solution 50% w/w (Fisher SS254)

Sodium cyanide, 99.99 % (Aldrich 43,159-1)

Sodium perchlorate monohydrate, HPLC-grade
(Fisher S490)

Copper cyanide (AlfaAesar 12135)

Potassium ferrocyanide(II) trihydrate (Aldrich 22,768-4)

Potassium dicyanoargentate(I) (AlfaAesar 12551)

Potassium dicyanoaurate(I) (AlfaAesar 12552)

Potassium hexacyanocobaltate(III) (AlfaAesar 23126)

Potassium tetracyanonickelate(II) monohydrate
(Strem 93-2836)

PREPARATION OF SOLUTIONS AND REAGENTS

Prepare all solutions from analytical reagent-grade chemicals and Type I reagent-grade deionized water with a specific resistance of 18.0 M Ω -cm or greater, filtered through a 0.2- μ m filter immediately before use.

Eluent Preparation

Eluent 1 (20 mM Sodium Hydroxide/150 mM Sodium Cyanide)

Use high-quality water of high resistivity (18.0 M Ω -cm or better) that contains as little dissolved carbon dioxide as possible. Biological contamination should be absent. Sodium hydroxide eluent should be prepared with 50% (w/w) sodium hydroxide solution. Sodium hydroxide pellets are covered with a thin layer of sodium carbonate and should not be used under any circumstances. Keep all eluents blanketed under helium at 34–55 kPa (5–8 psi) after preparation. If maintained under helium, this and the following eluents can be used for approximately one week.

To prepare 2 L of 20 mM NaOH/150 mM NaCN, place 14.70 g sodium cyanide into a 2-L volumetric flask containing 1.9 L of deionized water and degas for 20 min by sonicating under vacuum. Use a plastic pipette to deliver 2.08 mL (or 3.2 g) of 50% (w/w) sodium hydroxide. Bring to volume with degassed deionized water. Cap and invert the volumetric flask eight times to mix. *Note: Do not excessively mix, because this action will increase the carbonate ion in the solution by trapping carbon dioxide from the air.*

Eluent 2 (20 mM Sodium Hydroxide/300 mM Sodium Perchlorate)

Place 84.20 g HPLC-grade sodium perchlorate monohydrate (NaClO₄ · H₂O) into a 2-L volumetric flask containing 1.9 L of deionized water and degas for 20 min by sonicating under vacuum. Use a plastic pipette to deliver 2.08 mL (or 3.2 g) of 50% (w/w) sodium hydroxide. Bring to volume with degassed deionized water. Cap and invert the volumetric flask eight times to mix. Continue degassing for 10 min and then blanket with helium as described above.

Eluent 3 (20 mM Sodium Hydroxide)

Add 2.08 mL (or 3.2 g) of 50% (w/w) sodium hydroxide to a 2-L volumetric flask containing 1.9 L of degassed deionized water. Bring to volume with degassed deionized water. Cap and invert the volumetric flask eight times to mix. Continue degassing for 10 min and then blanket with helium as described above.

Diluent (10 mM Sodium Hydroxide)

Add 1.04 mL (1.6 g) of 50% (w/w) sodium hydroxide to a 2-L volumetric flask containing 1.9 L of degassed deionized water. Bring to volume with degassed deionized water. Cap and invert the volumetric flask eight times to mix. Continue degassing for 10 min.

Standard Preparation

Store the metal cyanide reagent salts in a desiccator protected from the light. To prepare stock standards (1000 mg/L) for each metal cyanide species, weigh the amount of the appropriate compound given in Table 2 into a 100-mL volumetric flask. Add enough 10 mM sodium hydroxide solution to dissolve the cyanide complex, bring to volume with 10 mM sodium hydroxide solution, mix, and transfer to an amber HDPE bottle. Store at 4–6 °C. The individual stock standards are stable under these conditions for the periods shown in Table 2.

TABLE 2. PREPARATION OF METAL CYANIDE STOCK STANDARDS

Anion	Compound	Mass (g)	Stability** (days)
[Ag(CN) ₂] ⁻	KAg(CN) ₂	0.1244	1
[Au(CN) ₂] ⁻	KAu(CN) ₂	0.1157	30
[Cu(CN) ₃] ²⁻	Cu(CN) and NaCN	0.0632*	1
[Ni(CN) ₄] ²⁻	K ₂ Ni(CN) ₄ · H ₂ O	0.1591***	1
[Fe(CN) ₆] ⁴⁻	K ₄ Fe(CN) ₆ · 3 H ₂ O	0.1993	30
[Co(CN) ₆] ³⁻	K ₃ Co(CN) ₆	0.1546	30

* Dissolve the CuCN with 0.1384 g sodium cyanide in a 100-mL volumetric flask containing 50 mL 10 mM sodium hydroxide solution. Bring to volume with 10 mM sodium hydroxide solution. Stir or sonicate for 1 h or until dissolved.

** Stability in number of days when stored in amber HDPE at 4–6 °C. Prepare fresh stock standards as needed according to this table.

*** Dissolve (1.4806 + 0.1107 × n) g of potassium nickel cyanide mono- or polyhydrate, K₂[Ni(CN)₄] · n H₂O, where n = number of water molecules of hydration.

Precaution: Some of the metal cyanide complexes are very toxic. Avoid contact with water or acid. Clean up and appropriately dispose of any spills.

Prepare calibration standards spanning the linear calibration range of each analyte by diluting the 1000-mg/L stock standards with 10 mM sodium hydroxide solution. To prepare mixed standards, measure appropriate volumes of the 1000-mg/L standards into 100-mL volumetric flasks, bring to volume with 10 mM sodium hydroxide solution, mix, and transfer to an amber HDPE bottle. These mixed calibration standards should be prepared fresh on the day of use.

Table 3 shows the concentration of calibration standards prepared in this way for the ASTM study.

TABLE 3. CONCENTRATIONS OF METAL CYANIDE CALIBRATION STANDARDS

Anion	Concentration (mg/L)				
	Level 1	Level 2	Level 3	Level 4	Level 5
[Ag(CN) ₂] ⁻	100	25	6.250	1.562	0.391
[Au(CN) ₂] ⁻	50	12.50	3.125	0.781	0.195
[Cu(CN) ₃] ²⁻	2.0	0.50	0.125	0.031	0.008
[Ni(CN) ₄] ²⁻	200	50	12.50	3.125	0.781
[Fe(CN) ₆] ⁴⁻	20	5.0	1.250	0.312	0.078
[Co(CN) ₆] ³⁻	100	25	6.250	1.562	0.391

SAMPLE PREPARATION

This section briefly summarizes the sample preparation procedure outlined in the ASTM/EPA draft method followed in the study. The ASTM study organizers provided six matrices and concentrated spiking solutions with instructions to spike each matrix at six levels. The six levels consisted of three pairs of closely spaced concentrations (Youden Pairs). The six matrices were deionized water, drinking water, groundwater, surface water, wastewater, and ocean water.

Upon collection, the samples were treated, if necessary, with powdered lead carbonate to remove sulfide interferences, and with sodium thiosulfate to remove interfering oxidants, in accordance with *Standard Methods*.⁷ The samples were then adjusted with sodium hydroxide to pH = 12.5 and stored in amber

bottles at 4–6 °C. Samples preserved in this way must be analyzed within 14 days. On the day of analysis, the samples were brought to room temperature, spiked with the spiking solutions, and then filtered through 0.22- μ m nylon filters into the autosampler vials.

SYSTEM PREPARATION AND SETUP

Verify that the pump flow rate is within specifications and recalibrate if necessary. A GP50 should deliver water at 1.0 ± 0.005 mL/min against a constant backpressure of 2000 psi. Verify that the UV/Vis absorbance detector wavelength accuracy is within specifications and recalibrate if necessary. It is a good practice to periodically record the visible lamp output (i.e., the reference cell current in nA) and elapsed time to aid in troubleshooting. Consult the pump or detector manuals for procedural details.

Install an IonPac ATC-3 between the eluent reservoir containing sodium cyanide and the pump inlet. The ATC-3 removes metal cyanide impurities present in the sodium cyanide solution that would otherwise cause elevated background noise. Regenerate the ATC-3 as needed by using a trap column/suppressor cleanup kit (059659) according to the installation and instruction manual (Document No. 031835).

Install and configure the autosampler and thermal compartment with a 25- μ L sample loop. The most accurate and precise injections are made with a calibrated sample loop flushed with about four loop volumes of sample before injection. Install a 250- μ L sample syringe and set the “Syringe Speed” to 4 or 5. Enter the correct sample “Loop Size” and “Sample Syringe Volume” in the AS50 Plumbing Configuration Screen. Refer to the *AutoSelect™ AS50 Autosampler Operator’s Manual* (Document No. 31169) for details. Install a gradient mixer and an IonPac ATC-3 between the pump and injection valve.

Install a 2 \times 50 mm IonPac AG11 and a 2 \times 250 mm IonPac AS11 column. Rinse the column with the ending eluent composition (10:45:45) for 30 min. Equilibrate the column with the initial eluent composition (10:10:80) for 10 min before analyzing a system blank of deionized water. In an equilibrated system, the background shift during the gradient run should be less than 100 mAU. The peak-to-peak noise and drift should not exceed 5 mAU/min. There should be no significant peaks eluting within the retention time windows of the metal cyanide analyte anions.

Inject a mid-level standard. The column is equilibrated when two consecutive injections of the standard produce the same retention time for the metal cyanide complex anions. Confirm that the resulting chromatogram resembles the chromatogram of the standard shown in Figure 1B.

RESULTS AND DISCUSSION

Calibrate the system by injecting one blank and at least five standards for every two decades of the calibration range. Plot the peak area for each metal cyanide complex versus the concentration injected and use a linear regression to fit the data. Table 4 summarizes the calibration data for a typical calibration curve obtained by injecting calibration standards covering the ranges shown. The calibration curve is linear over two orders of magnitude for the silver, nickel, iron, and cobalt cyanide complexes. Copper cyanide and gold cyanide were calibrated over a smaller interval. On the AS11, the copper cyanide, gold cyanide, and nickel cyanide complexes begin to coelute at higher concentrations, requiring the analyst to judge where to split the peaks. The problem is less severe for nickel cyanide, the later-eluting peak. Any samples containing high levels of copper or gold cyanide should be diluted to a level where coelution does not occur. Note that because of differences in molar absorptivity at 215 nm among the metal cyanide complexes, the linear calibration range is significantly different from one complex to another.

Figure 1 compares the chromatograms of a calibration standard obtained by using either the AS5 or AS11 columns. Both chromatograms were obtained using the same eluent gradient program. Under these conditions, the AS5 column (1A) provides better separation of the gold, copper, and nickel cyanide complexes, whereas the AS11 column (1B) provides better separation between the nickel, iron, and cobalt cyanide complexes. These differences in selectivity can be exploited to improve certain analyses. For example, the AS11 may better determine low levels of iron cyanide in the presence of high levels of nickel cyanide, because there is less likelihood of a large nickel cyanide peak obscuring a smaller iron cyanide peak. Note that the elution order of copper and gold is reversed on the two columns. Therefore, the AS5 may better determine trace levels of gold cyanide in the presence of higher levels of copper cyanide. If necessary, experienced chromatographers can modify the eluent gradient program to

optimize the separation for a particular analysis. One noteworthy feature of the 2-mm AS11 is that it consumes $\frac{1}{4}$ the eluent required by the 4-mm AS5—an important advantage that can lower reagent and waste disposal costs.

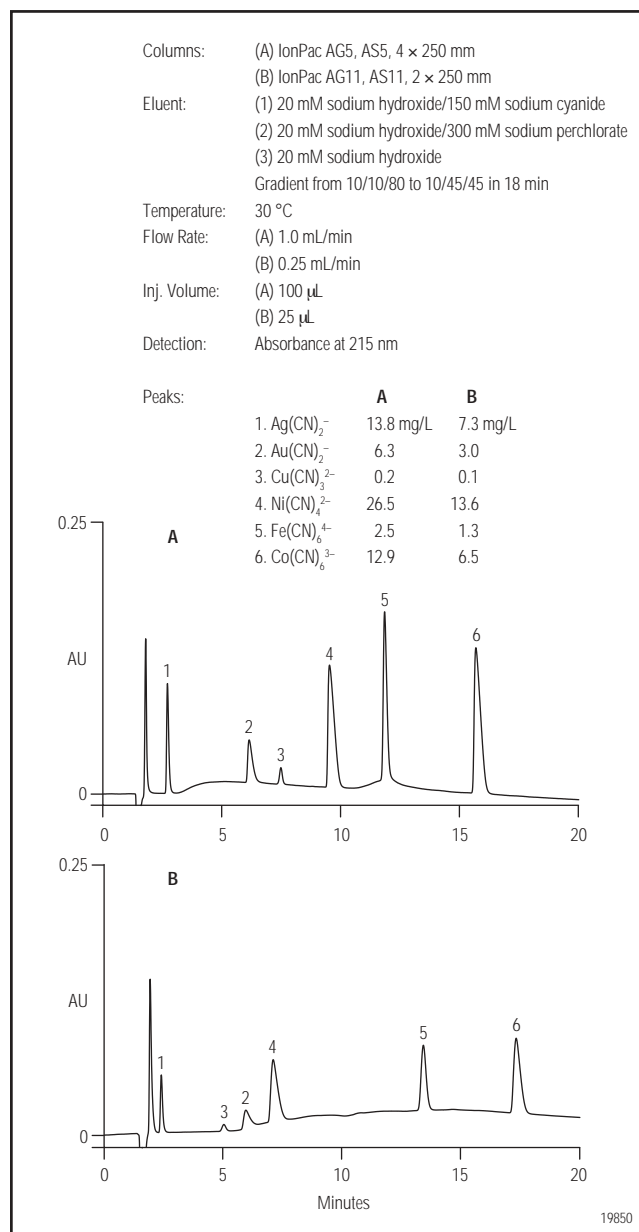


Figure 1. Anion-exchange separation with absorbance detection at 215 nm of metal cyanide complex standard on the (A) AS5 column and (B) AS11 column.

The limits of detection of this method were determined by making seven injections of deionized water, fortified with the analytes at levels yielding peaks approximately five times higher than the background noise. Column 3 of Table 4 shows the actual concentrations of the six metal cyanides analyzed. The formula given below Table 4 was used to calculate the minimum detection limit (MDL) for each analyte. Table 4 compares the calculated MDLs obtained on both the AS5 and AS11 columns.

Both columns provide minimum detection limits in the low-mg/L range for the tested metal cyanide complexes. Silver cyanide $[\text{Ag}(\text{CN})_2]^-$ exhibits a significantly higher MDL on the AS11 column because the complex elutes considerably earlier, in an area that has interference from the tail of the matrix peak. This interference makes integration of the silver cyanide peak less reliable, and the precision of the peak area measurement is reduced. At the low concentrations analyzed in this application update, both columns also exhibit some interference with iron cyanide $[\text{Fe}(\text{CN})_6]^{4-}$. On the AS5 column, the iron peak shows considerable tailing, whereas on the AS11 column, a small interfering peak is seen to coelute with iron. In both cases, the MDL for iron cyanide increases somewhat because of the interfering peak. It is possible that the interfering peak is from the unreduced iron (III) cyanide complex. If so, the AS11 might succeed in resolving these two complexes with a minor change to the gradient program.

The next several chromatograms illustrate typical real-world results. Figure 2 compares the AS5 and AS11 when analyzing a groundwater sample. In this fairly low-ionic-strength matrix, the two columns provide

comparable results, with the AS5 (Figure 2A) better resolving the gold, copper, and nickel complexes, whereas the AS11 (Figure 2B) exhibits less tailing of the iron cyanide peak and a better baseline in that region.

Figure 3 compares the AS5 and AS11 columns when analyzing a wastewater sample. In this high-ionic-strength matrix, the matrix ions elute as a very broad, tailing peak that poses a significant problem for recovery of silver cyanide. The AS5 (Figure 3A) shows significantly better recovery for the silver cyanide complex because it is resolved slightly better from the matrix ions than on the AS11 (Figure 3B). The peaks for the copper, gold, and nickel cyanide complexes are also more adversely affected on the AS11, though to a lesser extent than the silver cyanide complex.

Interferences

Exposure to light will cause photodecomposition of some metal cyanide complexes and reduce their concentration. Protect samples and standards from UV light by storing them in amber HDPE containers.

This method assumes that the alkaline conditions used will reduce iron (III) cyanide (ferricyanide) to iron (II) cyanide (ferrocyanide) resulting in a single peak for $[\text{Fe}(\text{CN})_6]^{4-}$. Calibration is based on the iron (II) cyanide complex. Report results as mg/L of $[\text{Fe}(\text{CN})_6]^{3-/4-}$ to represent the sum of ferrocyanide and ferricyanide. If unreduced $[\text{Fe}(\text{CN})_6]^{3-}$ is present, it will elute as a tail on the iron ferrocyanide peak.

The sodium cyanide used to prepare eluent 1 may contain metal cyanide complex impurities. To reduce the level of these impurities, use 99.99% sodium cyanide to prepare the eluent, and install an ATC-3 anion trap column as described in this application update.

TABLE 4. LINEAR RANGES AND MDLS FOR METAL CYANIDE COMPLEXES

Analyte	Range (mg/L)	MDL Standard (mg/L)	r ² AS5	r ² AS11	MDL* AS5 (mg/L)	MDL* AS11 (mg/L)
$[\text{Ag}(\text{CN})_2]^-$	1–100	5.0	0.99936	0.99921	0.18	1.48
$[\text{Au}(\text{CN})_2]^-$	1–50	5.0	0.99994	0.99999	0.64	0.28
$[\text{Cu}(\text{CN})_3]^{2-}$	0.1–2	0.1	0.99985	0.99993	0.08	0.06
$[\text{Ni}(\text{CN})_4]^{2-}$	1–200	5.0	0.99992	0.99991	1.10	0.77
$[\text{Fe}(\text{CN})_6]^{4-}$	0.1–20	0.5	0.99998	0.99999	0.12	0.09
$[\text{Co}(\text{CN})_6]^{3-}$	1–100	5.0	0.99998	0.99996	0.54	0.50

* The MDLs were calculated as $\text{MDL} = (t) \times (S)$ Where t = Student's t value for a 99% confidence level and a standard deviation estimate with $n - 1$ degrees of freedom ($t = 3.14$ for seven replicates of the MDL Standard), and S = standard deviation of the replicate analysis.

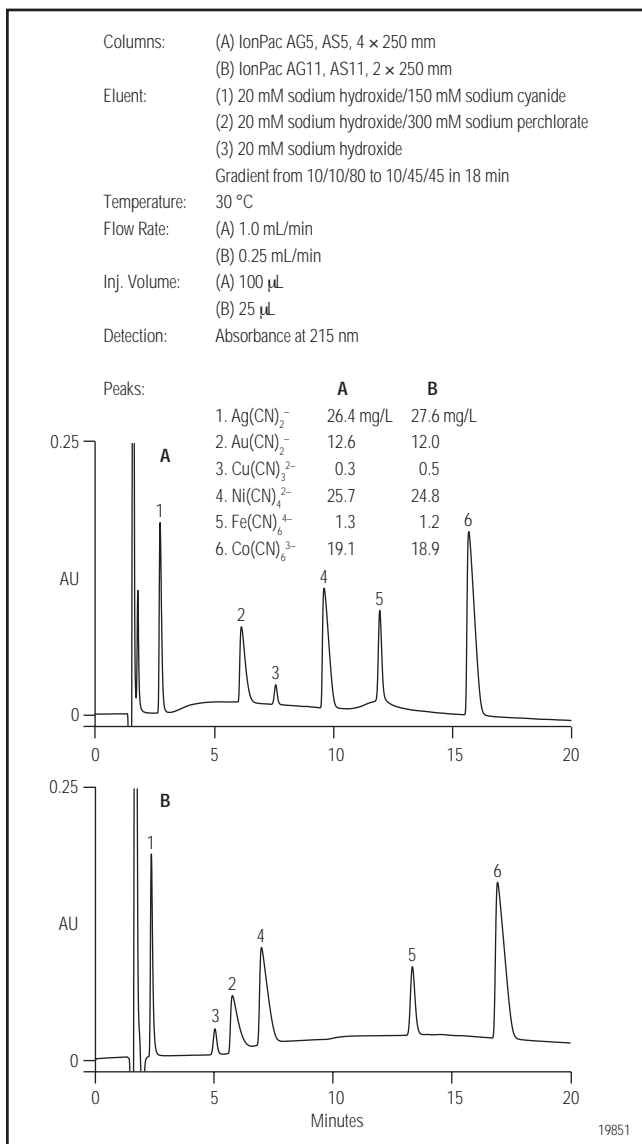


Figure 2. Determination of metal cyanide complexes in groundwater. Injection onto the (A) AS5 column and (B) AS11 column.

Precautions

Prepare all cyanide-containing solutions within a ventilation hood. Wear gloves, and avoid inhalation and skin or eye contact. Do not let acid contact any of the cyanide-containing samples, standards, or eluents. This contact would liberate hydrogen cyanide gas, an extremely toxic substance. Properly dispose of the old standards and eluent waste in accordance with applicable laws.

Strongly retained compounds from injected samples can accumulate on the column and degrade its performance. Signs of a fouled column include loss of capacity, loss of resolution, shortened retention times,

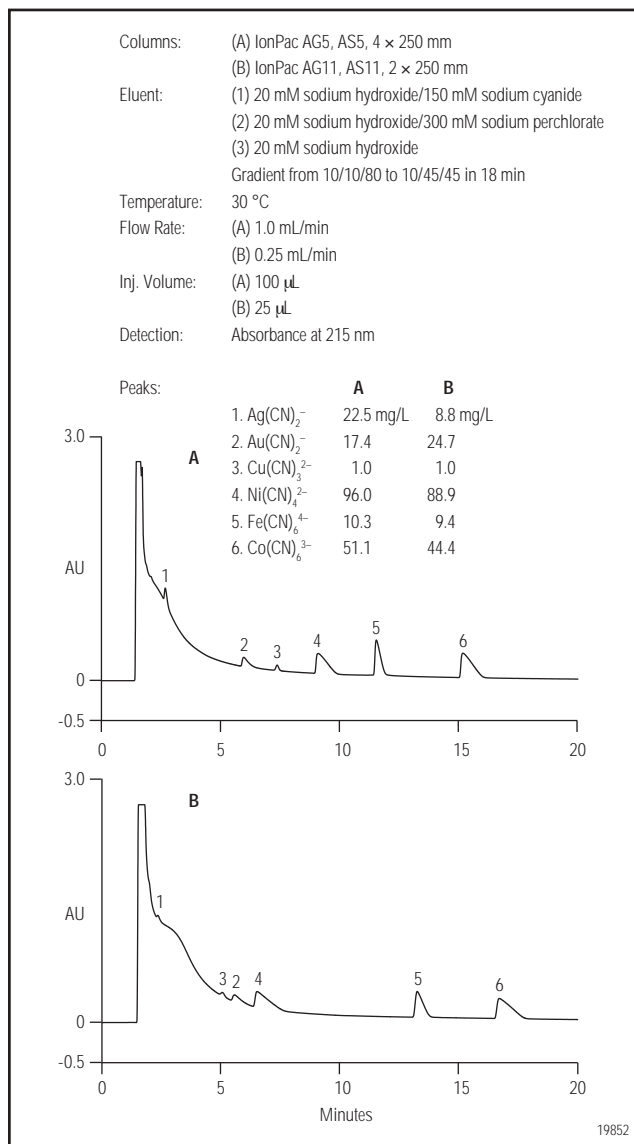


Figure 3. Determination of metal cyanide complexes in wastewater from a former manufactured gas plant. Injection onto the (A) AS5 column and (B) AS11 column.

higher noise and background, spurious peaks, and peak tailing. The AS11 column can be flushed with up to 100% acetonitrile to help remove contaminants from the column. The AS5 cannot tolerate more than 5% organic solvent in the eluent. For more information on column troubleshooting and cleanup, see the *Installation Instructions and Troubleshooting Guide for the IonPac AS11 Analytical Column* (Document No. 034791).

Some groundwater samples contain particulates that will plug the column and increase the backpressure. Use a guard column to protect the analytical column; change the guard column if such a sample causes a sudden increase in total backpressure to greater than 3000 psi.

REFERENCES

1. *Standard Methods for the Examination of Water and Wastewater*. 17th Edition, 1989. APHA-AWWA-WPCF. 4500-CN B., p. 4–34.
2. *Ibid*, p. 38.
3. Federal Register. *Guidelines Establishing Test Procedures for the Analysis of Pollutants: Available Cyanide in Water*; Vol. 64, No. 250; U.S. Environmental Protection Agency; Dec. 30, 1999.
4. *Standard Methods for the Examination of Water and Wastewater*. 17th Edition, 1989. APHA-AWWA-WPCF. 4500-CN B., p. 28.
5. Dionex Corporation. Application Note 55; Sunnyvale, CA.
6. ASTM Draft Method. *Determination of Metal Cyanide Complexes in Wastewater and Drinking Water using Anion Exchange Chromatography with UV Detection*. Task Group D 19.05; Task Group Chair, Sharon Drop.
7. *Standard Methods for the Examination of Water and Wastewater*. 17th Edition, 1989. APHA-AWWA-WPCF. 4500-CN B., p. 4–25.
8. Smith, R. M.; Martel, A. E. *Critical Stability Constants, Volume 4: Inorganic Complexes*; Plenum Press: New York, NY, 1976.
9. Gerhardt, W. *Ullman's Encyclopedia of Industrial Chemistry*; 5th Edition, Vol. A8.

LIST OF SUPPLIERS

- Aldrich Chemical Company, Inc., 1001 West Saint Paul Avenue, P.O. Box 355, Milwaukee, WI 53233 USA, Tel: 800-558-9160, www.aldrich.sial.com.
- Alfa Aesar, 30 Bond St., Ward Hill, MA 01835 USA, Tel.: 800-343-0660, www.alfa.com.
- Fisher Scientific, 2000 Park Lane, Pittsburgh, PA 15275-1126 USA, Tel: 800-766-7000, www.fishersci.com.
- VWR Scientific Products, 1310 Goshen Parkway, West Chester, PA 19380 USA, Tel: 800-932-5000, www.vwr.com (for Burdick and Jackson, EM Science, Fluka, and Gelman).



DIONEX



Chromleon and IonPac are registered trademarks of Dionex Corporation.
Acrodisk is a registered trademark of Gelman Corp.

Dionex Corporation
1228 Titan Way
P.O. Box 3603
Sunnyvale, CA
94088-3603
(408) 737-0700

Dionex Corporation
Salt Lake City Technical Center
1515 West 2200 South, Suite A
Salt Lake City, UT
84119-1484
(801) 972-9292

Dionex U.S. Regional Offices
Sunnyvale, CA (408) 737-8522
Westmont, IL (630) 789-3660
Houston, TX (281) 847-5652
Atlanta, GA (770) 432-8100
Marlton, NJ (856) 596-06009

Dionex International Subsidiaries
Austria (01) 616 51 25 Belgium (03) 353 42 94 Canada (905) 844-9650 China (852) 2428 3282 Denmark 36 36 90 90
France 01 39 30 01 10 Germany 06126-991-0 Italy (06) 66 51 50 52 Japan (06) 6885-1213 Korea 82 2 2653 2580
The Netherlands (0161) 43 43 03 Switzerland (062) 205 99 66 United Kingdom (01276) 691722
* Designed, developed, and manufactured under an NSAI registered ISO 9001 Quality System.

