

Now sold under the
Thermo Scientific brand

Thermo
SCIENTIFIC

Determination of Additives in Carbonated Beverages

INTRODUCTION

The soft drink industry is one of the largest in the world, with revenue from sales of carbonated soft drinks totaling billions of dollars annually. While the recipes for these beverages remain proprietary, critical components used as preservatives and sweeteners are subject to analysis for quality control, and must be identified on the beverage's label.

Additives such as benzoate and sorbate function as preservatives. Citrate is used as both a preservative and a flavor agent. Caffeine is an integral part of the overall profile of most colas. Aspartame, acesulfame, and saccharin are three common artificial sweeteners which function as sugar substitutes. Many methods have been developed for determining sweeteners and additives in drink formulations.¹⁻⁴

In this Application Note, we separate caffeine, sorbate, benzoate, citrate, aspartame, acesulfame and saccharin (structures are shown in Figure 1) in carbonated drinks in a single run using the Acclaim® Mixed-Mode WAX-1 column. This column features a new mixed-mode silica-based packing material that incorporates both hydrophobic and weak anion-exchange properties.⁵ Unlike traditional reversed-phase substrates, the new packing features an alkyl longchain with an ionizable

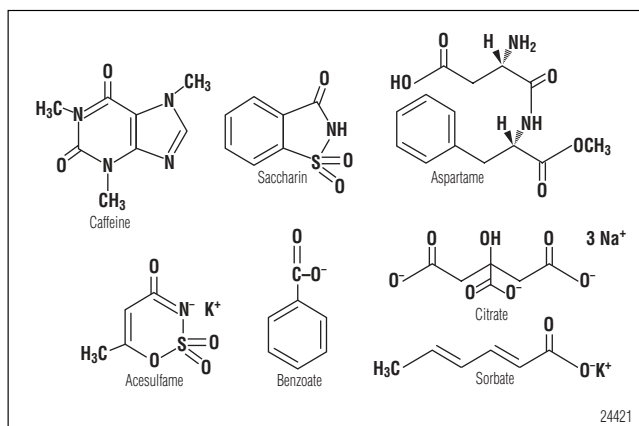


Figure 1. Structures of the seven analytes.

terminus. The column demonstrates great potential for separating a wide variety of samples that contain a mixture of anionic and neutral compounds, including food, beverage, pharmaceutical, and chemical samples.

The Acclaim column's mixed-mode capability provides determination of the compounds of interest in many samples in a single injection, rather than two separate injections on two different types of columns.

Table 1. Preparation of Mixed Stock Standard Solution				
Analyte	Concentration of Stock Standard (mg/L)	Volume of Added Stock Standard (mL)	Volume of Mixed Stock Standard (mL)	Concentration of Each Standard (mg/L)
Caffeine	1400	1.43	100 (diluted with water)	20
Aspartame	500	12.00		60
Acesulfame	1000	20.00		200
Saccharin	1000	6.00		60
Sorbate	1000	10.00		100
Benzoate	1000	10.00		100
Citrate	1500	40.00		600

EQUIPMENT

UltiMate® 3000 HPLC system
 HPG 3400A pump with SRD 3400 Solvent Rack
 w/degasser
 TCC 3000 Thermostatted Column Compartment
 WPS 3000TSL Autosampler
 VWD 3400 UV/Vis detector
 Chromeleon® 6.80 SP1 Chromatography Workstation

REAGENTS AND STANDARDS

Water, Milli-Q® Gradient A10
 Methanol (CH₃OH) and acetonitrile (CH₃CN),
 HPLC grade, Fisher
 Methanesulfonic acid (MSA), > 99.5%, Aldrich
 Potassium dihydrogen phosphate (KH₂PO₄),
 analytical grade, SCRC, China
 Caffeine, analytical grade, SCRC, China
 Sorbate, analytical grade, SCRC, China
 Benzoate, analytical grade, SCRC, China
 Citrate, analytical grade, SCRC, China
 Aspartame, analytical grade, Nutang Chemical Co. Ltd,
 China
 Acesulfame, analytical grade, Supelco/Sigma Aldrich
 United States
 Saccharin, analytical grade, Alfa Aesar China

PREPARATION OF STANDARDS

Stock standard solutions

The concentrations of stock standard solutions were 500 mg/L for aspartame, 1000 mg/L for acesulfame, saccharin, sorbate and benzoate, 1400 mg/L for caffeine, and 1500 mg/L for citrate.

Mixed stock standard solution

The mixed stock standard solution was prepared according to the procedure specified in Table 1.

Mixed working standard solutions

The mixed stock standard solution was diluted with mobile phase solution to prepare the mixed working standard solutions used for calibration. The concentrations of each analyte in the mixed working standard solutions are shown in Table 2.

Table 2. Concentrations of Mixed Working Standard Solutions

Analyte	Concentration (mg/L)								
	# 1	# 2	# 3	# 4	# 5	# 6	# 7	# 8	# 9*
Caffeine	2	2.5	3.33	4	5	6.67	10	20	70
Aspartame	6	7.5	10	12	15	20	30	60	—
Acesulfame	20	25	33.3	40	50	66.67	100	200	—
Saccharin	6	7.5	10	12	15	20	30	60	—
Sorbate	10	12.5	16.7	20	25	33.3	50	100	—
Benzoate	10	12.5	16.7	20	25	33.3	50	100	—
Citrate	60	75	100	120	150	200	300	600	—

* This additional standard is prepared by adding 50 μ L of the 1400 mg/L caffeine stock standard to 950 μ L of mobile phase.

SAMPLE PREPARATION

Six bottled carbonated drinks were purchased from a local supermarket. Prior to injection, the samples were filtered through a 0.45- μ m filter and diluted with mobile phase.

CHROMATOGRAPHIC CONDITIONS

Column: Acclaim Mixed-Mode WAX-1,
5 μ m, 4.6 \times 150 mm (P/N = 064984)

Column Temp.: 30 $^{\circ}$ C

Mobile Phase: 120 mM KH_2PO_4 /CH₃CN
(45% : 55%, v/v, pH 3.0,
adjusted with MSA)

Flow rate 1.5 mL/min

Inj. Volume: 5 μ L

Detection: Absorbance at 210 nm

RESULTS AND DISCUSSION

Optimized chromatographic conditions

Separations with the Acclaim Mixed-Mode WAX-1 column can be optimized by changing the following conditions of the mobile phase: 1) concentration of organic solvent, 2) ionic strength (buffer concentration), and 3) pH. The effects of changing these parameters are demonstrated by recording the retention time changes of a polar compound (4-hydroxybenzoic acid) and nonpolar compound (butylbenzene) with controlled changes of the mobile phase.⁶

Retention time for the nonpolar compound was almost unchanged when the buffer concentration changed from 100 to 20 mM. It altered only slightly when pH was changed from 6 to 2.6, but increased significantly when the organic solvent concentration was decreased from 50% to 45%.

Retention time of the polar compound increased significantly when the buffer concentration was changed from 100 to 20 mM. Retention time decreased significantly when pH was changed from 6 to 2.6, and decreased slightly when the organic solvent concentration was decreased from 50% to 45%. Using these guidelines, the chromatographic conditions were optimized

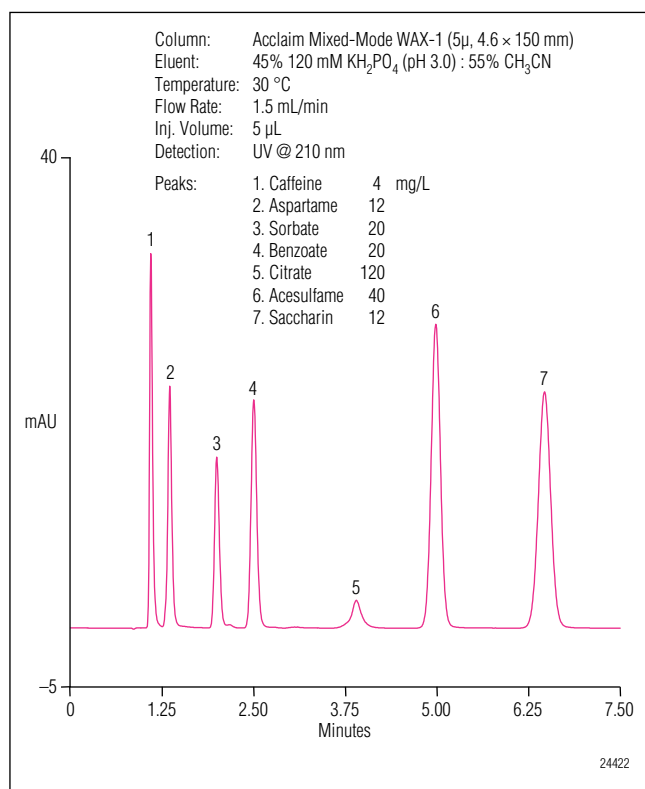


Figure 2. Chromatogram of mixed stock standard.

to obtain separation and baseline resolution of seven analytes in carbonated beverages (Figure 2).

Reproducibility, linearity and detection limits

Prior to sample analysis method reproducibility was demonstrated by making seven replicate injections of

Analyte	RT RSD (%)	A _{peak} RSD (%)
Caffeine	0.000	0.169
Aspartame	0.000	0.257
Sorbate	0.000	0.223
Benzoate	0.130	0.594
Citrate	0.091	1.221
Acesulfame	0.065	0.294
Saccharin	0.098	0.299

This table shows seven injections of mixed standard #4 (Table 2)

mixed stock standard solution. Table 3 summarizes the retention time and peak area precision data.

Calibration linearity for each of the seven compounds was determined by making replicate injections of a mixed standard prepared at eight different concentrations. The external standard method was used to calculate the calibration curve and to quantify each of the compounds in the six samples tested. Table 4 shows the calibration data. The single-sided Student's *t*-distribution was used to estimate method detection limits (MDL). These data are also reported in Table 4.

Sample analysis

Six different soft drinks were tested: one lemon-lime soda, one orange soda, two colas, and two diet colas. The diet colas contained no added sugar. Figures 3-8 show chromatograms of each sample and the same sample spiked with a mixed standard. Results, amounts

Analyte	Equations	r	RSD (%)	MDL (mg/L)
Caffeine	$A = 0.3700C + 0.0181$	0.9999	1.6036	0.6
Aspartame	$A = 0.1043C + 0.0735$	0.9998	1.2287	0.2
Sorbate	$A = 0.0520C + 0.0417$	0.9995	1.8813	1.1
Benzoate	$A = 0.0829C + 0.1198$	0.9992	2.3464	1.2
Citrate	$A = 0.0028C - 0.0774$	0.9988	2.6191	8.5
Acesulfame	$A = 0.0917C + 0.1352$	0.9998	1.2345	1.2
Saccharin	$A = 0.3143C + 0.1499$	0.9999	1.6036	0.4

Note: The single-sided Student's *t* test method (at the 99% confidence limit) was used to determine MDL, where the standard deviation (SD) of the peak area of seven injections is multiplied by 3.14 (at *n* = 7) to yield the MDL

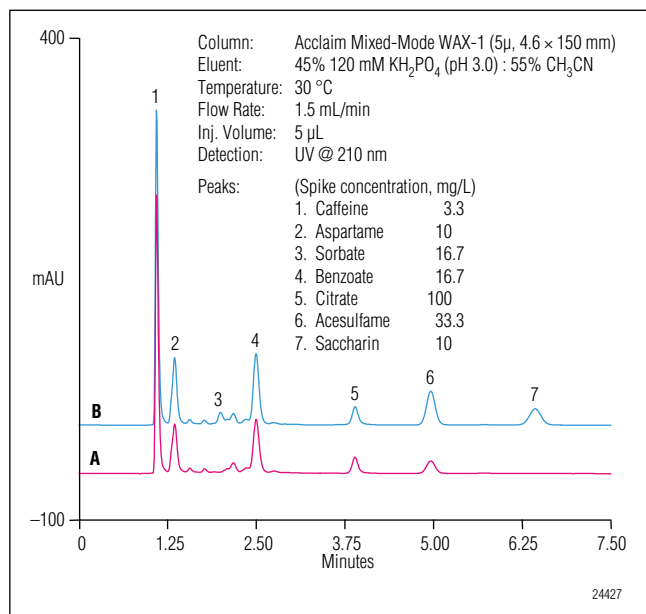


Figure 7. Overlay of chromatograms of carbonated beverage diet cola #2, (A) diluted three-fold and the same sample (B) spiked.

of each additive per beverage, and recovery data are summarized in Table 5.

Samples show an unidentified peak eluting at approximately 1.6 min, however, this peak was not present in either of the diet colas tested (samples 3 and 5). Tests showed the peak to correspond to fructose (Figure 9).

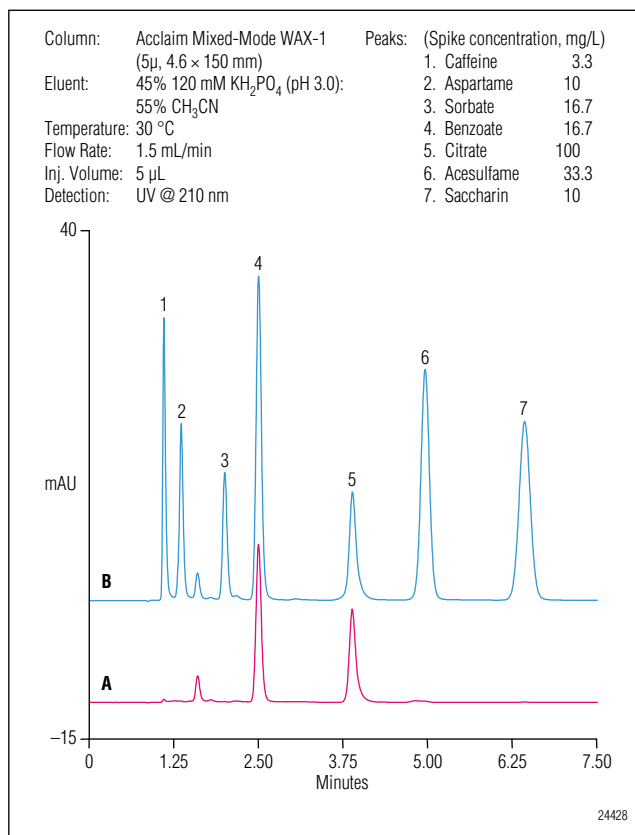


Figure 8. Overlay of chromatograms of (A) orange soda sample, diluted ten-fold and (B) the same sample spiked.

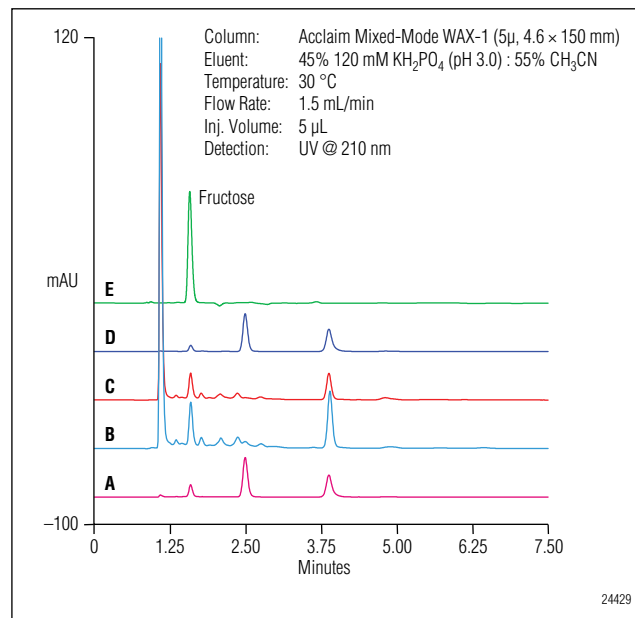


Figure 9. Overlay of chromatograms of (A) lemon-lime carbonated beverage diluted ten-fold, (B) cola #1, diluted three-fold, (C) cola #2, diluted five-fold, (D) orange soda, diluted ten-fold, and (E) single standard of fructose, 5%, w/w.

Table 5. Analysis Results for the Carbonated Drinks¹

Analyte	Lemon-Lime Soda (Diluted 10-fold)				Cola #1 (Diluted 3-fold)			
	Detected (mg/L) ³	Added (mg/L)	Found (mg/L) ⁴	Recovery (%)	Detected (mg/L)	Added (mg/L)	Found (mg/L)	Recovery (%)
Caffeine	ND ²	3.3	3.4	103	94	3.3	3.6	109
Aspartame	ND	10	9.3	93	ND	10.0	11.3	113
Sorbate	ND	16.7	17.4	106	15.6	16.7	22.4	108
Benzoate	200	16.7	14.9	89	ND	16.7	20.7	103
Citrate	2767	100	89	89	2250	100	106	106
Acesulfame	ND	33.3	33.9	102	ND	33.3	34.2	103
Saccharin	ND	10.0	10.0	100	ND	10.0	10.0	100
Analyte	Diet Cola #1 (Diluted 3-fold)				Cola #2 (Diluted 5-fold)			
	Detected (mg/L)	Added (mg/L)	Found (mg/L)	Recovery (%)	Detected (mg/L)	Added (mg/L)	Found (mg/L)	Recovery (%)
Caffeine	131.4	3.3	3.1	94.0	99.3	3.3	3.1	94
Aspartame	ND	10.0	10.4	104	ND	10.0	9.4	94
Sorbate	15.6	16.7	17.3	104	18.9	16.7	16.9	101
Benzoate	104	16.7	15.5	93	ND	16.7	14.3	86
Citrate	1410	100	92	92	1852	100	106	106
Acesulfame	324	33.3	29	87	ND	33.3	36.1	108
Saccharin	ND	10.0	9.9	99	ND	10.0	9.9	99
Analyte	Diet Cola #2 (Diluted 3-fold)				Orange Soda (Diluted 10-fold)			
	Detected (mg/L)	Added (mg/L)	Found (mg/L)	Recovery (%)	Detected (mg/L)	Added (mg/L)	Found (mg/L)	Recovery (%)
Caffeine	113.4	3.3	3.5	106	ND	3.3	3.5	106
Aspartame	113.1	10.0	10.5	105	ND	10.0	9.9	99
Sorbate	ND	16.7	16.6	99	ND	16.7	15.2	91
Benzoate	183	16.7	14.8	89	180	16.7	18.4	110
Citrate	1770	100	111	111	3815	100	100	100
Acesulfame	56.4	33.3	35.3	106	ND	33.3	33.8	102
Saccharin	ND	10.0	10.0	100	ND	10.0	9.7	97

Notes: 1. One sample and one spiked sample were prepared, with 3 injections made for each.

2. ND="not detected"

3. Detected = measured value of sample × diluted fold

4. Found = measured value of spiked sample – measured value of sample

REFERENCES

1. N.M.M. Coelho, L.M. Coelho, E.S. de Lima, A. Pastor and M. de la Guardia, *Talanta*, 66 **2005** 818.
2. B. Saad, Md.F. Bari, M.I. Saleh, K. Ahmad and M.K.M. Talib, *J. Chromatogr. A*, 1073 **2005** 393.
3. M. S. García-Falcón and J. Simal-Gándara, *Food Control*, 16 **2005** 293.
4. T. Pérez-Ruiz, C. Martínez-Lozano, V. Tomás and J. Martín, *J. Chromatogr. A*, 1026 **2004** 57.
5. User Guide for Acclaim Mixed-Mode WAX Columns, Dionex Corporation LPN 065165.
6. X. Liu and C. Pohl, A New Multimode Stationary Phase: Characterization, Chromatographic Evaluation and Application, Dionex Corporation. LPN 1846-01 **2006**.

Acclaim, UltiMate, and Chromeleon are registered trademarks of Dionex Corporation
MilliQ is a registered trademark of Millipore Corporation

Passion. Power. Productivity.



Dionex Corporation

1228 Titan Way
P.O. Box 3603
Sunnyvale, CA
94088-3603
(408) 737-0700

North America

U.S. (847) 295-7500
Canada (905) 844-9650

South America

Brazil (55) 11 3731 5140

Europe

Austria (43) 1 616 51 25 Benelux (31) 20 683 9768 (32) 3 353 4294
Denmark (45) 36 36 90 90 France (33) 1 39 30 01 10 Germany (49) 6126 991 0
Ireland (353) 1 644 0064 Italy (39) 02 51 62 1267 Switzerland (41) 62 205 9966
United Kingdom (44) 1276 691722

Asia Pacific

Australia (61) 2 9420 5233 China (852) 2428 3282 India (91) 22 2764 2735
Japan (81) 6 6885 1213 Korea (82) 2 2653 2580 Singapore (65) 6289 1190
Taiwan (886) 2 8751 6655

www.dionex.com



LPN 1961 11/07
©2007 Dionex Corporation