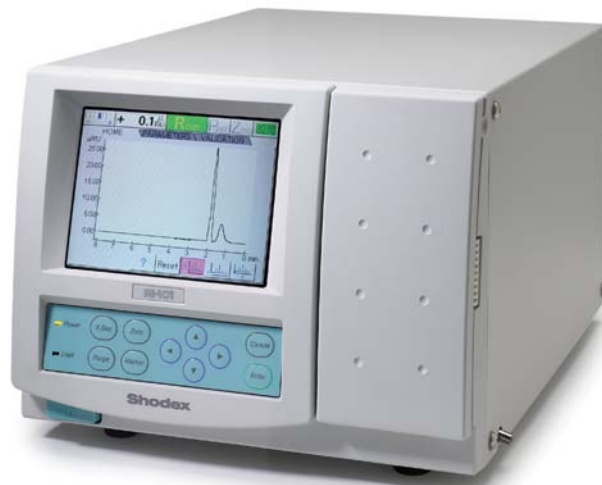


RI-101 Refractive Index Detector



The Thermo Scientific Dionex RI-101 Differential Refractive Index Detector is designed for use with the Thermo Scientific Dionex UltiMate® 3000 HPLC system. The detector is ideal for analysis of components with limited or no UV absorption, such as alcohols, sugars, saccarides, fatty acids, and polymers. It provides high sensitivity, fast baseline stabilization, and excellent reproducibility. The RI-101 is fully controlled by the Thermo Scientific Dionex Chromeleon® Chromatography Data system, or can operate in stand-alone mode.

Now sold under the
Thermo Scientific brand

Thermo
SCIENTIFIC

Features

- Automated validation functions save time and make validation of the instrument an easy task. The detector provides information on noise, drift, lamp age, lamp voltage, and temperature. A Span function verifies accurate signal response for a defined standard solution.
- A start-up sequence automates purging, equilibration, autozero and the control of baseline stability and noise.
- An optimized temperature control system ensures fast baseline stabilization after system start.
- A leak sensor allows for automated system shutdown in case of solvent.
- Temperature control from 30–50 °C
- A full-color liquid crystal display shows an on-line signal, and provides fast access to instrument settings and performance parameters.
- Operation with Chromeleon software makes the detector easy to use and ensures maximum productivity in instrument control, data processing and reporting of results.



Part of Thermo Fisher Scientific

RI-101 REFRACTIVE INDEX DETECTOR SPECIFICATIONS

Measuring Method:

Deflection type

Maximum Flow Rate:

10 mL/min (with water)

Analog Outputs:

Integrator: 0–1 V
Recorder: 0–10 mV

Refractive Index Range:

1.00 to 1.75°

Temperature Control:

30 to 50 °C in 1 °C steps

Contact Closure Inputs:

Autozero, marker, polarity, purge on/off

Range:

0.25 to 512 µRIU

Response:

0.1, 0.25, 0.5, 1.0, 1.5 2.0, 3.0, 6.0 s

Contact Closure Outputs:

Ready, solvent leak error

Linearity:

600 µRIU

Automated Startup Functions:

Purge cycles, equilibration, autozero, baseline drift and noise verification

Communication:

RS-232

Noise Level:

Less than 2.5 nRIU, response 1.5 s

Validation Functions:

Noise, temperature, drift, lamp age, lamp voltage, accuracy (determined filling the detector cell with a defined standard solution)

Power Consumption:

150 VA Max.

Autozero:

Optical and electronic autozero

Dimensions:

260 x 200 x 400 mm
(10.1 x 7.8 x 15.6 inches)

Flow cell:

8 µL; 0.05 MPa (7.5 psi) maximum pressure

Display:

Color liquid crystal display, allows real-time baseline monitoring

Weight:

12 kg (27 lbs)

Dead Volume:

Less than 600 µL

ORDERING INFORMATION

To order, use the following part numbers and contact your local Dionex office or distributor nearest you. In the U.S., call (800) 346-6390. In other regions, refer to the phone numbers below.

Detector	Part Number
RI-101 Differential Refractive Index Detector	5060.0030

Chromleon and UltiMate are trademarks of Dionex Corporation.

Speed · Simplicity · Solutions



Dionex Products

1228 Titan Way
P.O. Box 3603
Sunnyvale, CA
94088-3603
(408) 737-0700

North America

U.S./Canada (847) 295-7500

South America

Brazil (55) 11 3731 5140

Europe

Austria (43) 1 616 51 25 Benelux (31) 20 683 9768 (32) 3 353 4294
Denmark (45) 36 36 90 90 France (33) 1 39 30 01 10 Germany (49) 6126 991 0
Ireland (353) 1 644 0064 Italy (39) 02 51 62 1267 Sweden (46) 8 473 3380
Switzerland (41) 62 205 9966 United Kingdom (44) 1276 691722

Asia Pacific

Australia (61) 2 9420 5233 China (852) 2428 3282 India (91) 22 2764 2735
Japan (81) 6 6885 1213 Korea (82) 2 2653 2580 Singapore (65) 6289 1190
Taiwan (886) 2 8751 6655

www.thermoscientific.com/dionex



LPN 1483-03 PDF 6/11
© 2011 Dionex Corporation