

Determination of Dissolved Hexavalent Chromium in Drinking Water, Groundwater and Industrial Waste Water Effluents by Ion Chromatography

INTRODUCTION

Chromium exists in the environment in either the trivalent, Cr(III), or hexavalent, Cr(VI), form. Cr(III) is considered to be essential to mammals for the maintenance of glucose, lipid, and protein metabolism. On the other hand, Cr(VI) is known to have an adverse affect on the lungs, liver, and kidneys. The method presented here provides a sensitive and selective means of determining Cr(VI) as the chromate anion CrO_4^{2-} down to the 1-mg/L level in a variety of environmental matrices (1,2).

This method has been documented in several standard methodologies (1,3,4,7). It has been validated over the range of 1–1000 $\mu\text{g/L}$ in both waste water and drinking water (5) with a method detection limit in the range of 1 $\mu\text{g/L}$ (see Fig. 1). It has also been recommended for use in determining Cr(VI) in extracts of ambient air particulates (6) as well as air particulates from waste incinerators (7). For a more complete discussion of this method, please refer to Dionex Technical Note 26: “Determination of Cr(VI) in Water, Wastewater, and Solid Waste Extracts”.

EQUIPMENT

Any Dionex chromatographic system configured with:
UV/Visible absorbance detector (VDM-2)
Postcolumn reagent delivery system

REAGENTS AND STANDARDS

| | |
|-----------------------|----------------------|
| Ammonium sulfate | Methanol, HPLC grade |
| Ammonium hydroxide | Sulfuric acid |
| 1,5-Diphenylcarbazide | |

CONDITIONS

| | |
|-------------------------------|---|
| Columns: | IonPac® AS7 analytical and IonPac NG1 guard |
| Eluent: | 250 mM Ammonium sulfate, 100 mM ammonium hydroxide |
| Eluent Flow Rate: | 1.5 mL/min |
| Expected Backpressure: | 900–1100 psi (6.2–7.6 kPa) |
| Postcolumn Reagent: | 2.0 mM Diphenylcarbazide, 10% methanol, 1.0 N sulfuric acid |
| Postcolumn Reagent Flow Rate: | 0.5 mL/min |
| Detection: | Visible, 530 nm |
| Sample Volume: | 50 μL |

PREPARATION OF SOLUTIONS AND REAGENTS

| | |
|---------|--|
| Eluent: | 250 mM Ammonium sulfate, 100 mM ammonium hydroxide |
|---------|--|

Dissolve 33 g of ammonium sulfate in 500 mL of water and add 6.5 mL of ammonium hydroxide. Dilute to 1 L with water.

| | |
|---------------------|---|
| Postcolumn Reagent: | 2.0 mM Diphenylcarbazide, 10% methanol, 1.0 N sulfuric acid |
|---------------------|---|

Dissolve 0.50 g of 1,5-diphenylcarbazide in 100 mL of HPLC-grade methanol. Add 500 mL of water containing 28 mL of 98% sulfuric acid while stirring. Dilute with water to 1 L in a volumetric flask. This reagent is stable for four or five days, but should only be prepared in 1-L quantities as needed.

| | |
|-----------|-----------------|
| Standard: | 1000 ppm Cr(VI) |
|-----------|-----------------|

Dissolve 0.283 g of potassium dichromate ($\text{K}_2\text{Cr}_2\text{O}_7$) that has been dried at 100 °C for one hour in water. Dilute to 100 mL in a volumetric flask.

Working standards are prepared by appropriate dilutions of the stock solutions. As an example, for a 1-ppm Cr(VI) standard, pipet 1.00 mL of the chromium stock solution into a 1-L volumetric flask. Dilute to 1 L with water.

DISCUSSION

An aqueous sample is injected onto a high capacity anion exchange column where Cr(VI) as CrO_4^{2-} is retained and then eluted with an alkaline sulfate eluent. After this separation, a diphenylcarbazide color reagent is added to the eluent stream, which then flows through a photometric detector. The reagent forms a color complex with Cr(VI), which is detected by absorbance at 530 nm. An example of hexavalent chromium in a aqueous sample is shown in Figure 2.

This method is not applicable to the determination of total chromium in environmental samples. For regulatory purposes, total chromium is traditionally defined as the sum of the free and combined chromium from both the liquid and solid portions of the sample. Accordingly, the sample must undergo a strong acid digestion to release the chromium for analysis. This step converts all chromium to the Cr(III) form. Other methods can be used to determine the total chromium in the digest solution.

REFERENCES

1. Arar, E.J.; Long, S.E.; Pfaff, J.D., "Method 218.6 Determination of Dissolved Hexavalent Chromium in Drinking Water, Groundwater, and Industrial Wastewater Effluents by Ion Chromatography", Nov. 1991, United States Environmental Protection Agency (U.S. EPA), Cincinnati, OH 45268.
2. Arar, E.J.; Pfaff, J.D. *J. Chromatogr. Sci.* **1991**, 546, 335-340.
3. Proposed ASTM Method: "Dissolved Hexavalent Chromium in Water by Ion Chromatography", June 1991, American Society for Testing and Materials (ASTM), Committee D-19, Philadelphia, PA 19103.
4. Proposed ASTM Method: "Collection and Analysis of Hexavalent Chromium in the Atmosphere", Nov. 1991, ASTM, Committee D-22, Philadelphia, PA 19103.
5. Edgell, K.; Longbottom, J.; Joyce, R., Final Report: "Determination of Dissolved Hexavalent Chromium

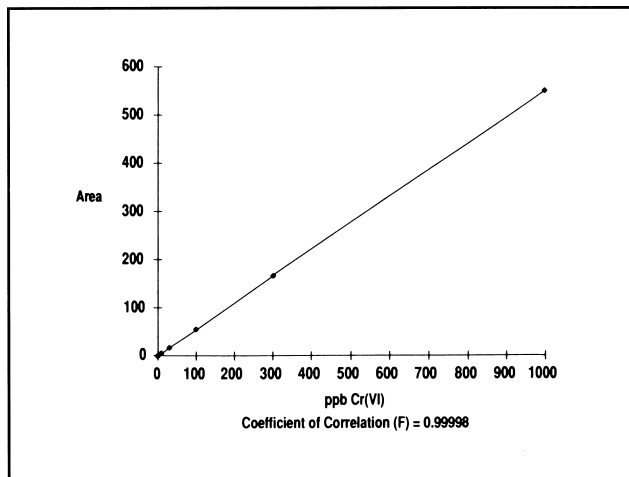


Figure 1 Area response for colorimetric chromium detection

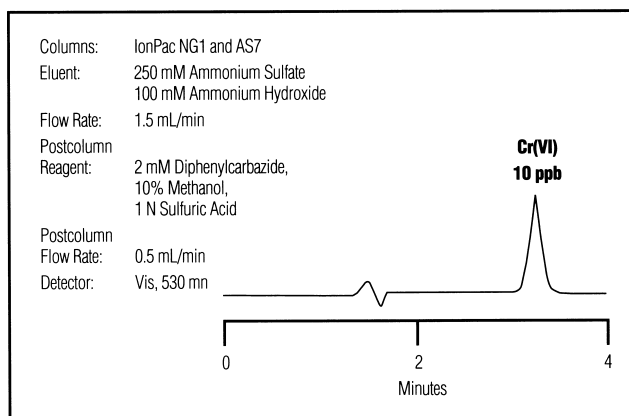


Figure 2 Determination of Cr(VI) in water, waste water, and solid waste extracts

in Drinking Water, Groundwater, and Industrial Wastewater Effluents by Ion Chromatography: Collaborative Study", Oct. 1991, U.S. EPA, Cincinnati, OH 45268.

6. Pappa, R.; Castillo, N., "Determination of Ambient Levels Of Hexavalent Chromium By Ion Chromatography", California Air Resources Board, El Monte, CA. Presented at the Annual Meeting of the Air and Waste Management Association, Anaheim, CA, June 1989.
7. "Determination of Hexavalent Chromium Emissions from Stationary Sources", in *U.S. EPA Methods Manual for Compliance With The BIF Regulations: Burning Hazardous Waste in Boilers and Industrial Furnaces*, U.S. EPA/53-SW-91-010, NTIS, Springfield, VA 22161, Dec. 1990.



ASE is a registered trademark of Dionex Corporation.

Printed on recycled and recyclable paper.

Dionex Corporation
 1228 Titan Way
 P.O. Box 3603
 Sunnyvale, CA
 94088-3603
 (408) 737-0700

Dionex Corporation
 Salt Lake City Technical Center
 1515 West 2200 South, Suite A
 Salt Lake City, UT
 84119-1484
 (801) 972-9292

Dionex U.S. Regional Offices
 Sunnyvale, CA (408) 737-8522
 Westmont, IL (630) 789-3660
 Houston, TX (281) 847-5652
 Atlanta, GA (770) 432-8100
 Marlton, NJ (856) 596-0600

Dionex International Subsidiaries
 Austria (01) 616 51 25 Belgium (015) 203800 Canada (905) 844-9650 France 01 39 46 08 40 Germany 06126-991-0
 Italy (06) 66 51 50 52 Japan (06) 6885-1213 The Netherlands (0161) 434303 Switzerland (062) 205 99 66 United Kingdom (01276) 691722
 * Designed, developed, and manufactured under an NSAI registered IO 9001 Quality System.



LPN 034685-01 10M 9/00
 © 2000 Dionex Corporation