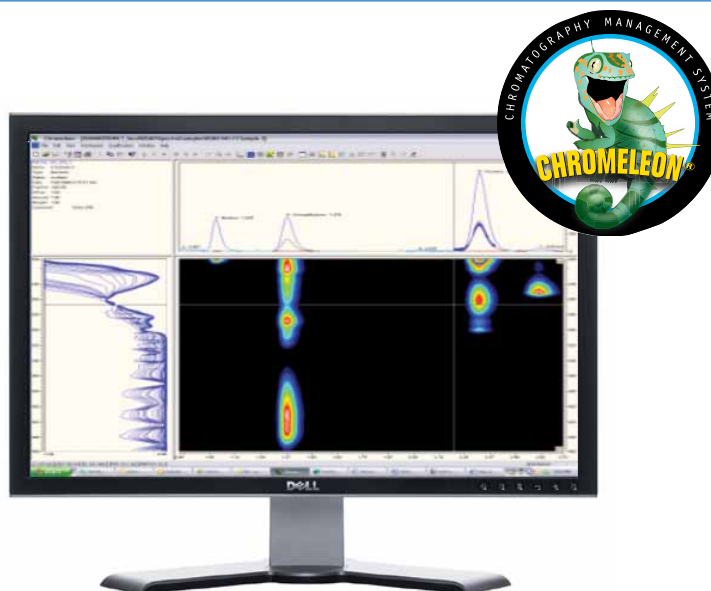


Software

Minimum Computer Requirements for Thermo Scientific Dionex Chromeleon 6.8 Chromatography Data Systems



COMPUTER REQUIREMENTS FOR CHROMELEON® 6.8 CHROMATOGRAPHY DATA SYSTEMS

Operating System ^a	Windows® XP Professional	Windows Vista Business/Ultimate	Windows 7 Professional
Service Pack	SP3	SP2	–
32- and 64-bit Versions	32-bit only	32-bit only	32-bit/64-bit
Processor	Pentium III 800 MHz min 2GHz recommended w/1 DAD-3000RS: 2.4 GHz min w/2 DAD-3000RS: 2 GHz dual core min	2 GHz Pentium 4 class min w/1 DAD-3000RS: 2.4 GHz Pentium 4 min w/2 DAD-3000RS: 2 GHz dual core CPU min	
RAM	256 MB min., 512MB recommended w/3D Detector: 512 MB min w/2 DAD-3000RS: 1 GB min	1 GB min	
Hard Disk	20 GB (60 GB) w/1 3D Detector: 40GB min; w/1 DAD-3000RS: 60GB min; w/2 DAD-3000RS: 100GB min		
Display	1024 × 768 w/256 colors min, 16-bit color or more recommended		
Ports	At least one USB port for license device; additional USB ports for systems and peripherals MWD-3000RS and DAD-3000RS detectors require USB 2.0 speed ^b		
Expansion Slot	One PCI or PCMCIA ^b slot for each RS-232, GPIB ^b , or DX-LAN™ ^b card		
Peripherals	Windows-compatible keyboard, mouse, printer, and DVD-ROM		

a) It is possible to install Chromeleon 6.8 on Windows Vista Enterprise. However, this combination has not been formally validated.

b) Please check with your Thermo Scientific Dionex product representative to determine which expansion cards you require.

Chromeleon software has not been validated for use on virtual machines. The specifications outlined in the table may be subject to change. Dionex product representatives recommends Dell® computers for Chromeleon software. Before purchasing components, contact your local Dionex products representative to confirm that these specifications are still current.

Chromeleon is a registered trademark of Dionex Corporation. Windows is a registered trademark of Microsoft Corporation. Dell is a registered trademark of Dell Corporation.

Speed · Simplicity · Solutions



Dionex Products

1228 Titan Way
P.O. Box 3603
Sunnyvale, CA
94088-3603
(408) 737-0700

North America

U.S./Canada (847) 295-7500

South America

Brazil (55) 11 3731 5140

Europe

Austria (43) 1 616 51 25 Benelux (31) 20 683 9768; (32) 3 353 4294
Denmark (45) 36 36 90 90 France (33) 1 39 30 01 10 Germany (49) 6126 991 0
Ireland (353) 1 644 0064 Italy (39) 02 51 62 1267 Sweden (46) 8 473 3380
Switzerland (41) 62 205 9966 United Kingdom (44) 1276 691722

Asia Pacific

Australia (61) 2 9420 5233 China (852) 2428 3282 India (91) 22 2764 2735
Japan (81) 6 6885 1213 Korea (82) 2 2653 2580 Singapore (65) 6289 1190
Taiwan (886) 2 8751 6655

www.thermoscientific.com/dionex



LPN 2330-01 PDF 07/11
©2011 Thermo Fisher Scientific, Inc.